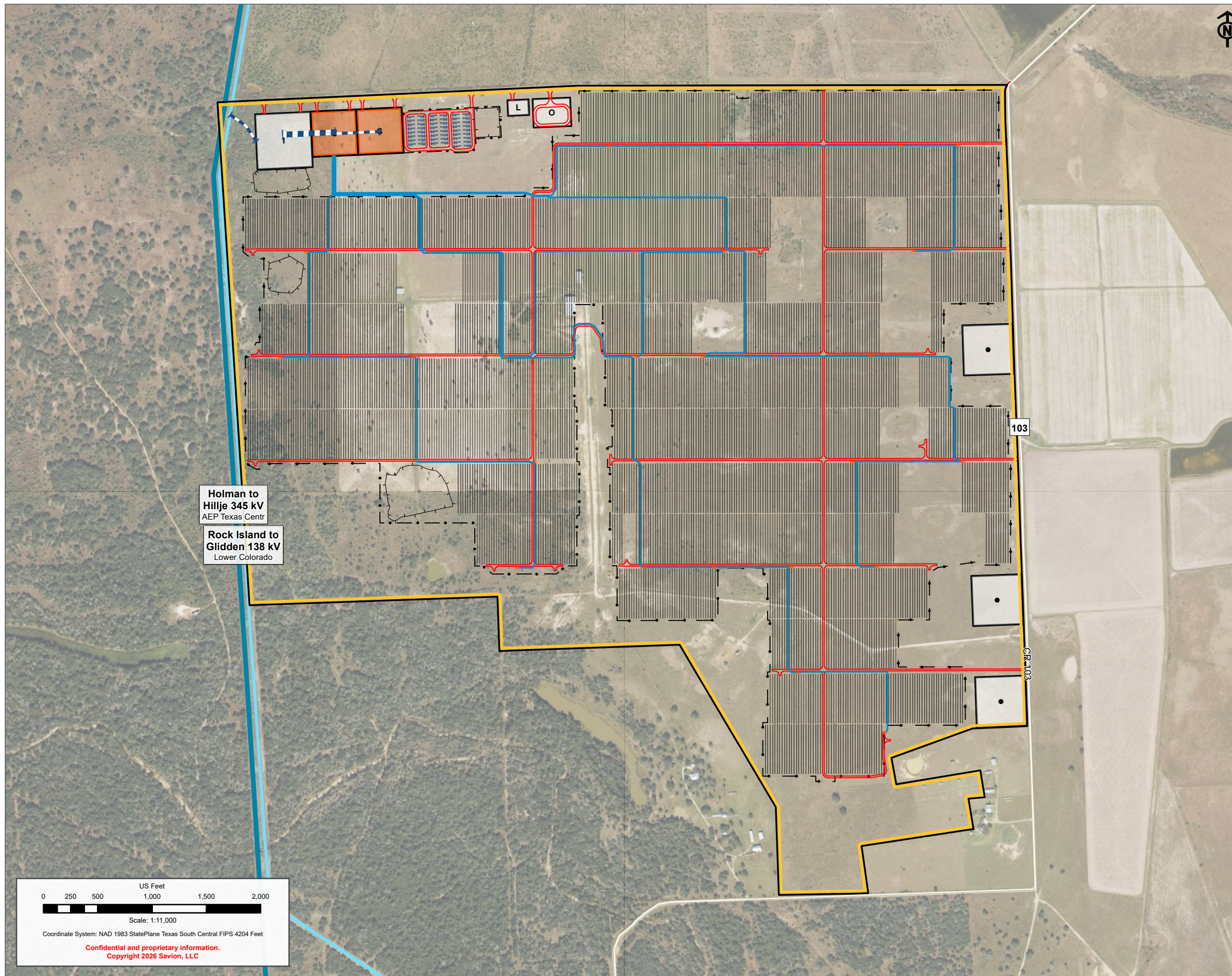


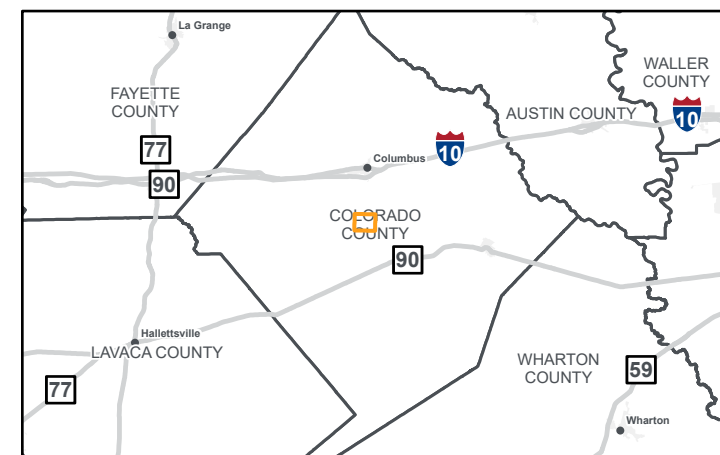
# FIREFLY FIELDS



- Project Boundary
- Project Layout**
- PCS
- Battery Storage Container
- Inverter
- Panel
- Project Gen-Tie
- UG Collection
- Access Road
- Security Fence
- Storm Water Detention Basin
- Project Facilities**
- POI Switching Station
- Substation
- Laydown Yard
- O&M
- Other
- Existing Transmission Lines**
- Voltage kV**
- 138
- 345

**Holman to Hillje 345 kV**  
AEP Texas Centr

**Rock Island to Glidden 138 kV**  
Lower Colorado



PRELIMINARY DESIGN – NOT FOR CONSTRUCTION

PROJECT: <b>FIREFLY FIELDS</b>	
DEVELOPER: <b>SAVION, LLC</b>	ENGINEER:
DATE: <b>5/27/2026</b>	SCALE: <b>1 INCH : 917 FEET</b>
NOTES:	
SHEET: <b>11X17 PROJECT (LLC)</b>	

